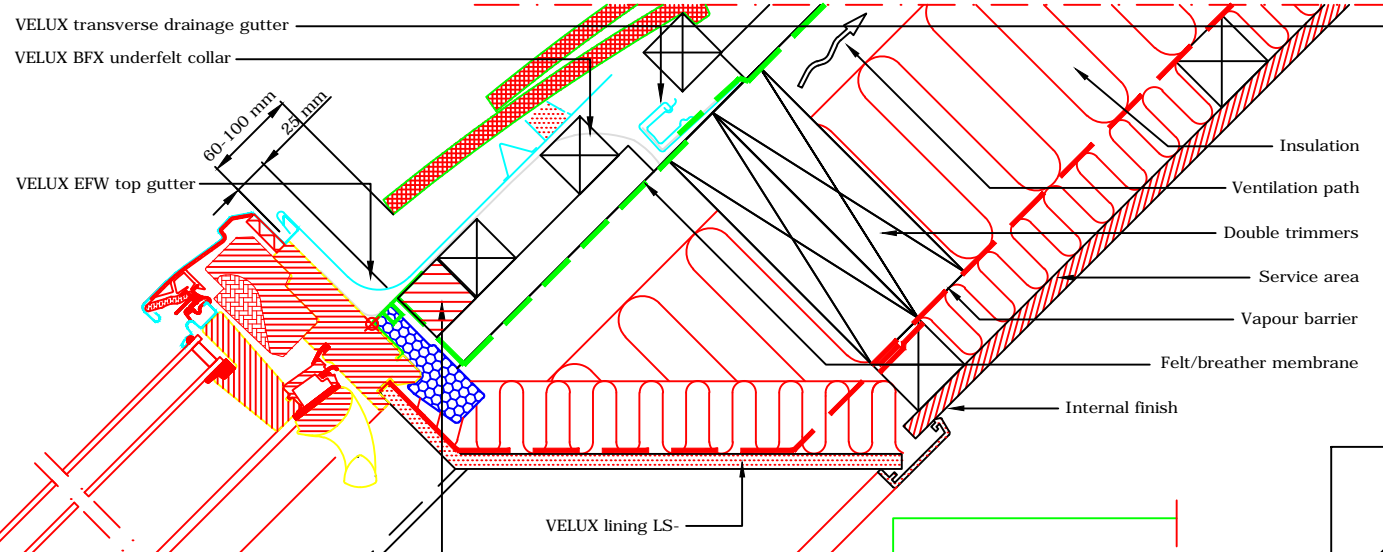
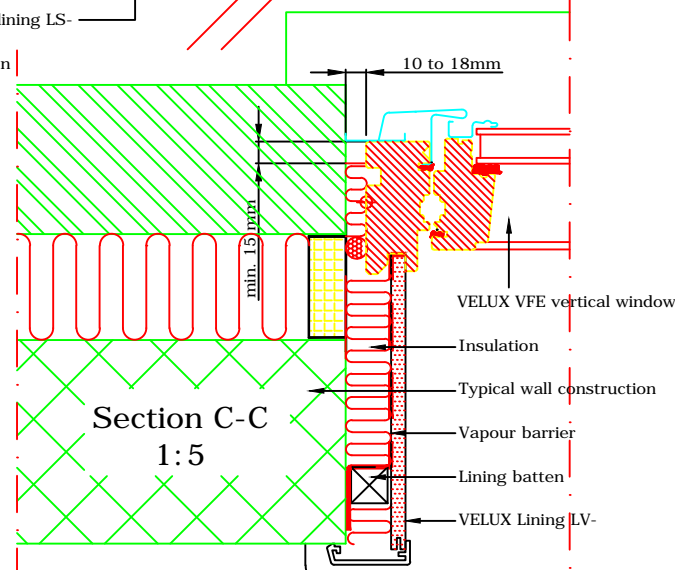


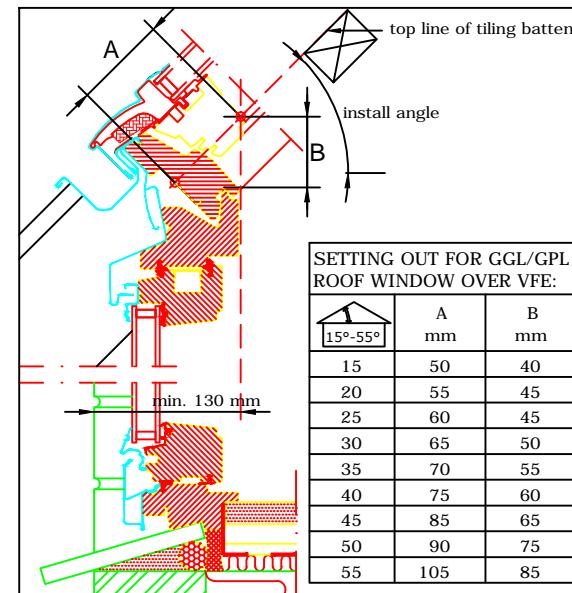
TYPICAL ELEVATION



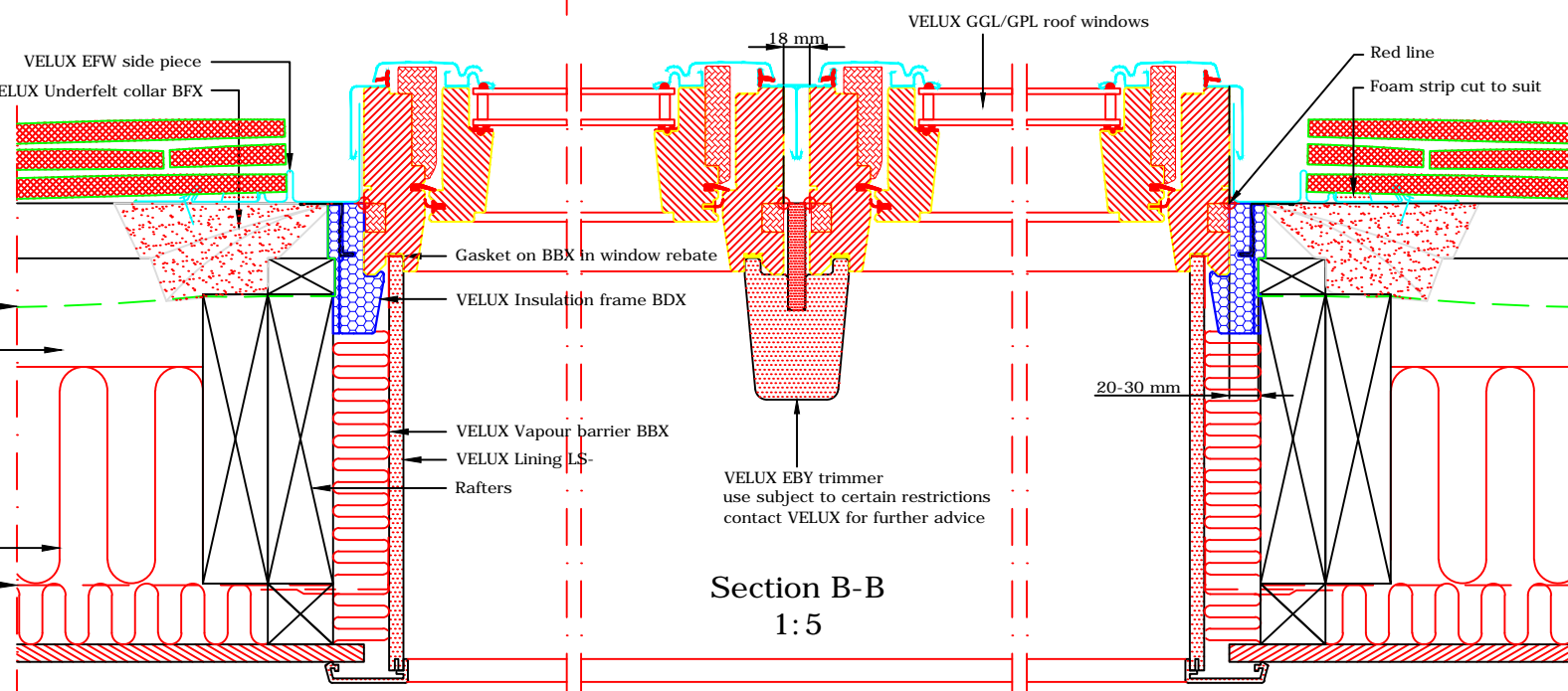
Section A-A  
1:5



Section C-C  
1:5



Gutter Detail  
1:2.5



Section B-B  
1:5

VELUX Products:

- GGL 15°-90°
- OR
- GPL 15°-55°
- \* 55°-75° with special springs
- VFE 90°
- EFW 15°-55°
- EBY W10
- BFX
- BDX
- BBX
- LS-
- LV-
- Roof covering:
- PLAIN TILES < 15 mm

SETTING OUT FOR GGL/GPL ROOF WINDOW OVER VFE:

Roof Pitch	A mm	B mm
15°-55°		
15	50	40
20	55	45
25	60	45
30	65	50
35	70	55
40	75	60
45	85	65
50	90	75
55	105	85

**VELUX**  
 VELUX Company Ltd  
 Woodside Way  
 Glenrothes, Fife KY7 4ND  
 tel: +44 (0) 1592 778 225

**VELUX vertical window**  
**VFE combi installation into plain tile**  
 EFW flashing kit - standard install - 18mm frame gap  
*All dimensions are in millimetres where shown*

NOTE! When installing VELUX roof windows, flashings and accessories, please ensure compliance with building regulations and British/European standards where necessary. This detail represents the principles of a typical installation only and the design and specification of the final detail is the responsibility of others.

Latest revision:  
 Note re: restrictions on use of EBY trimmer added

Date: June 2014  
 Rev no: A  
 Rev date: Nov 2014  
 Drawn: PJH

File name:  
**VFE-EFW-0114-1083**  
 Scale: 1:5 approx. @ A3